

MAPPING **POVERTY**

IN ALACHUA COUNTY

Mia Conza

Monica Waits

Wilton Mui

Noah Marks

URP 4273: Survey of Planning and Information Systems

DEFINE : **POVERTY**

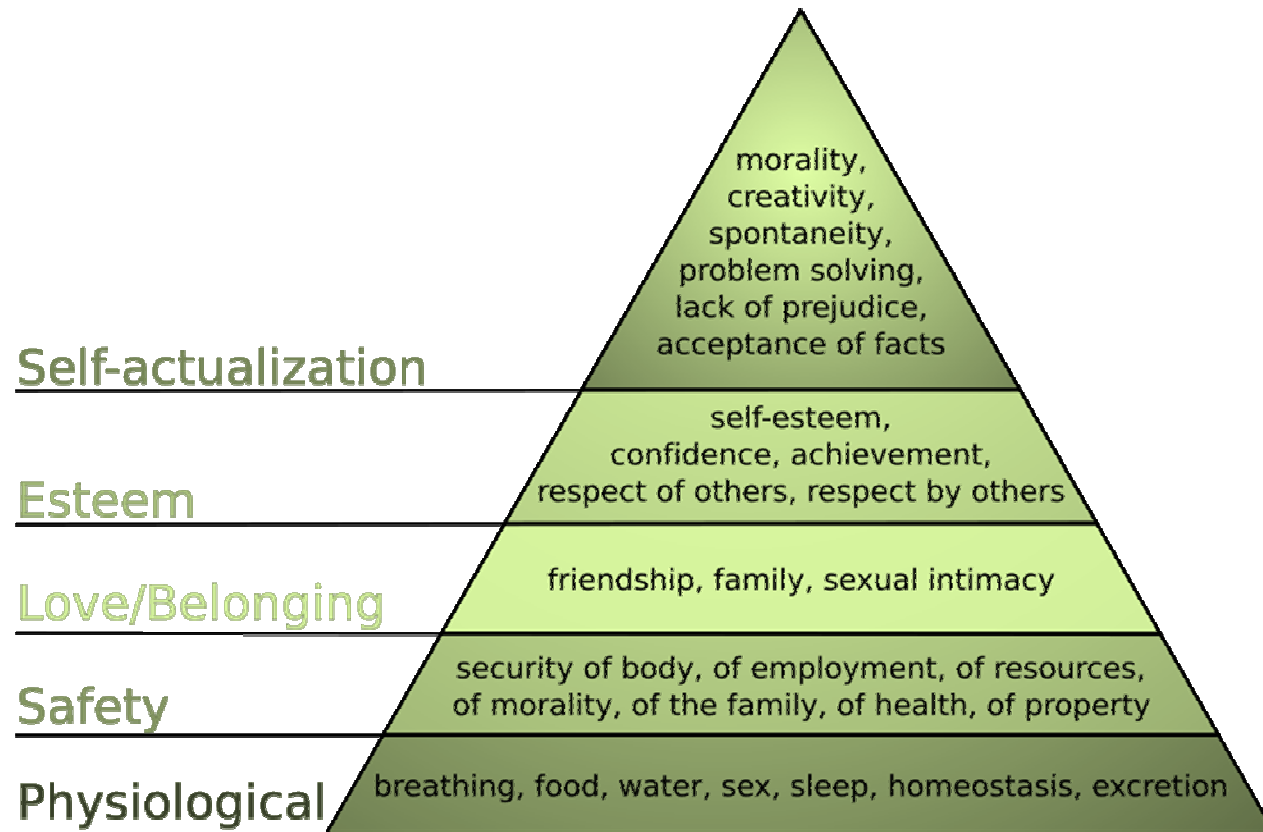
The shortage of **basic resources** which determine quality of life such as food, clothing, shelter and safe drinking water. It may also include the lack of **access to opportunities** such as **education** and **employment** which aid the escape from poverty and/or allow one to enjoy the respect of fellow citizens.

DEFINE : **POVERTY THRESHOLD**

Minimum level of income deemed necessary to achieve an adequate standard of living in a given country. In other words, poverty from a society's **point of view**.

The common **international poverty line** has been roughly \$1 a day, or more precisely \$1.08 at 1993 purchasing-power parity (PPP).

MASLOW'S HIERARCHY OF NEEDS



SPECIFIC OBJECTIVES

- 1:** Where are the monetarily poor?
- 2:** Who are the poor?
- 3:** What are their access to services?
- 4:** What can be done to improve access?

AREA OF EXTENT: Alachua County

UNIT OF ANALYSIS: U.S. Census Block and Block Group

OBJECTIVE 1 METHODOLOGY

Geography of Poverty : Where are the monetarily Poor?

- Create Composite Material Poverty Index (CMPI) map to identify three most impoverished regions of Alachua

- CMPI based on four variables concerned with **basic needs** and **material wealth**:

V1: Per Capita Income

V2: Federal Public Assistance

V3: Free and Reduced Lunch Students

V4: Substandard Housing

(values adjusted to exclude University of Florida students)

VARIABLE 1: INCOME DISPARITY

1999 Average Household Size 2.25 - 2.9 = 3

1999 HHS Poverty Guidelines

<u>Family Size</u>	<u>48 States and D.C.</u>	<u>Alaska</u>	<u>Hawaii</u>
1	\$8,240	\$10,320	\$ 9,490
2	11,060	13,840	12,730
3	13,880	17,360	15,970
4	16,700	20,880	19,210
5	19,520	24,400	22,450
6	22,340	27,920	25,690
7	25,160	31,440	28,930
8	27,980	34,960	32,170

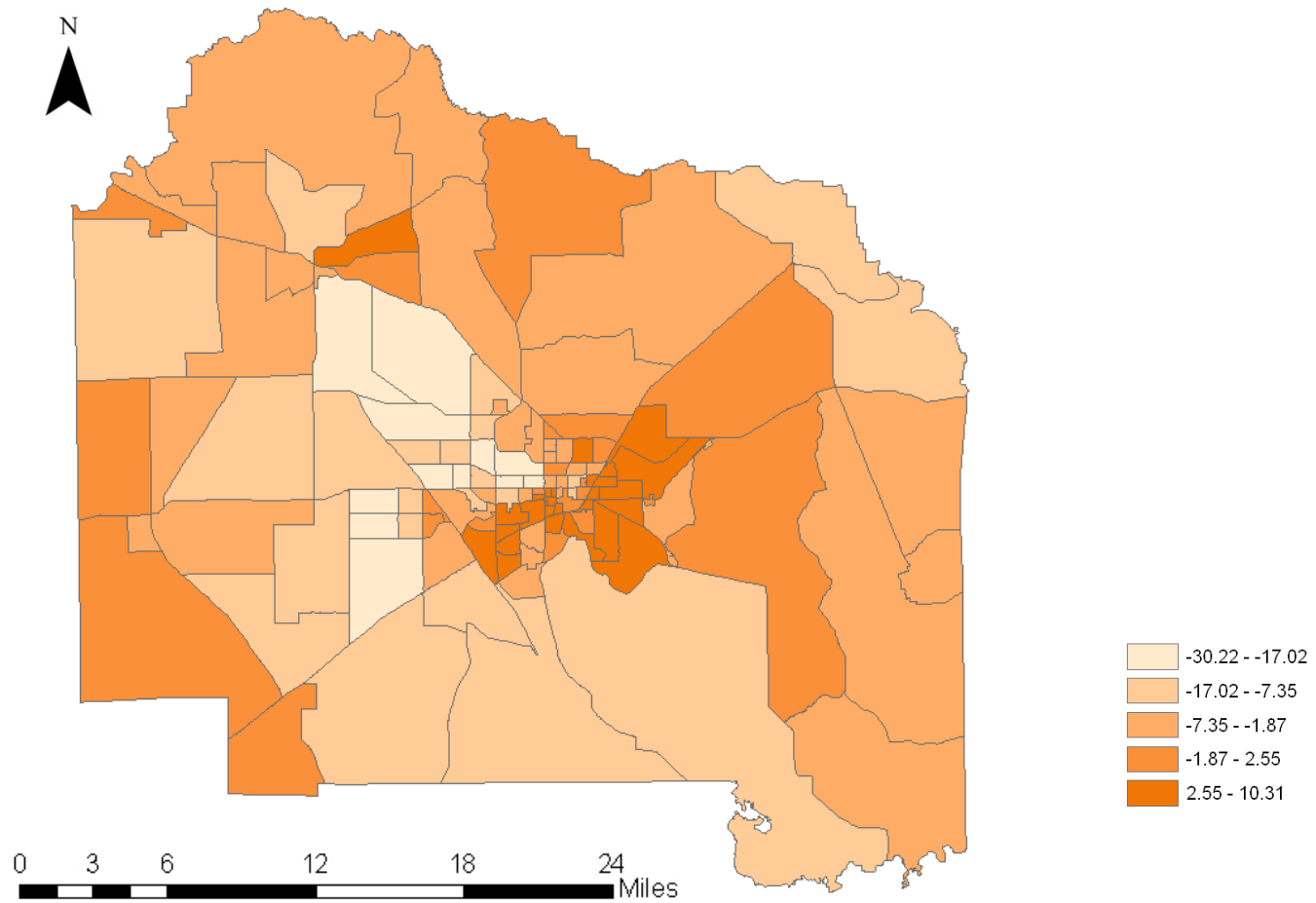
VARIABLE 1: INCOME DISPARITY**FORMULA:**

$$V1 = \frac{(\text{Federal Poverty Level}) - (\text{Per Capita Income})}{1000}$$

$$V1 = \frac{(13,880) - (\text{Per Capita Income})}{1000}$$

OBJECTIVE 1

VARIABLE 1: INCOME DISPARITY

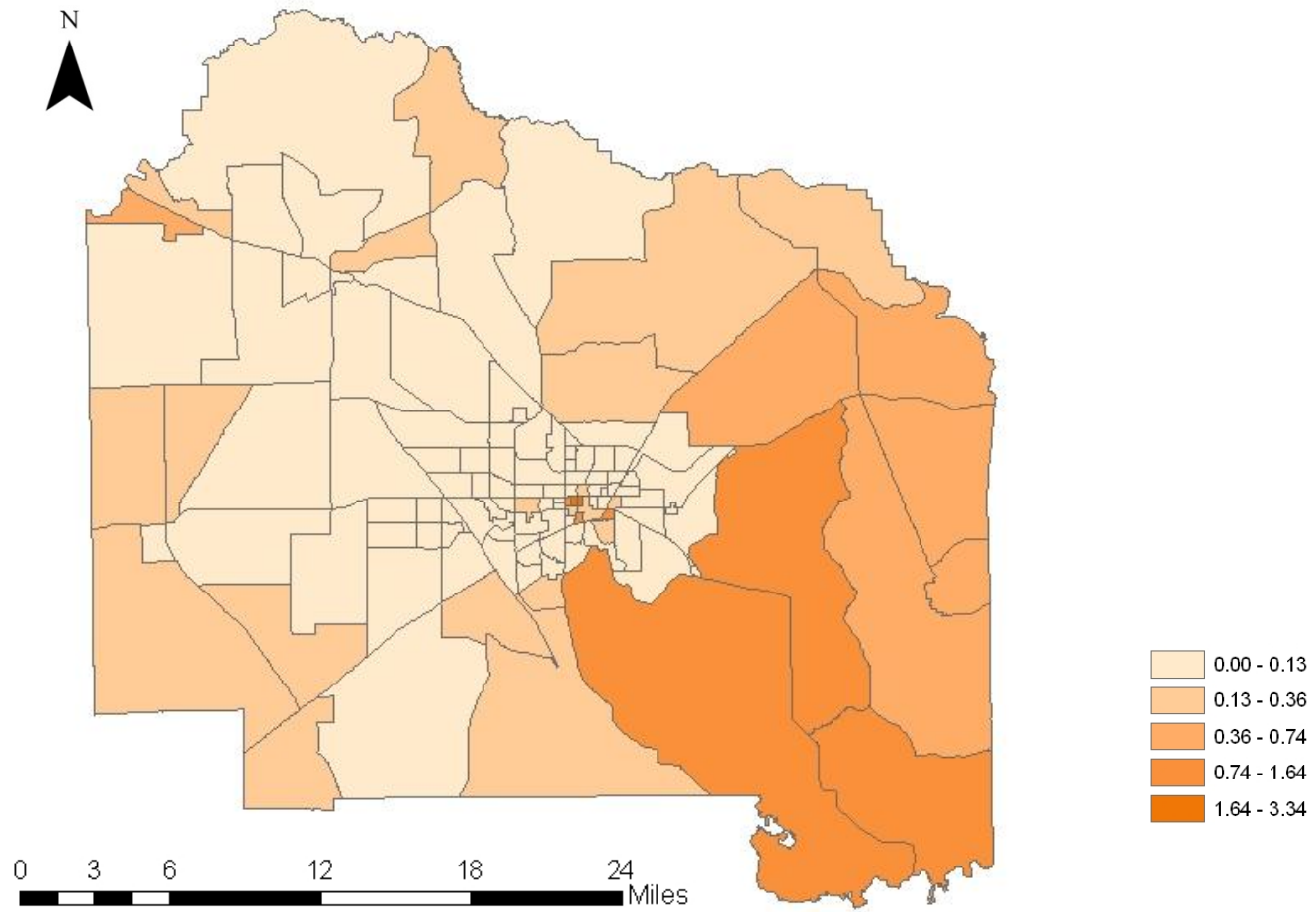


VARIABLE 2: PUBLIC ASSISTANCE**FORMULA:**

$$V2 = \frac{\text{(Public Assistance)}}{\text{(Population - UF Population)} (100)}$$

- Values adjusted for UF students to obtain more accurate reflection of individuals receiving assistance

VARIABLE 2: PUBLIC ASSISTANCE



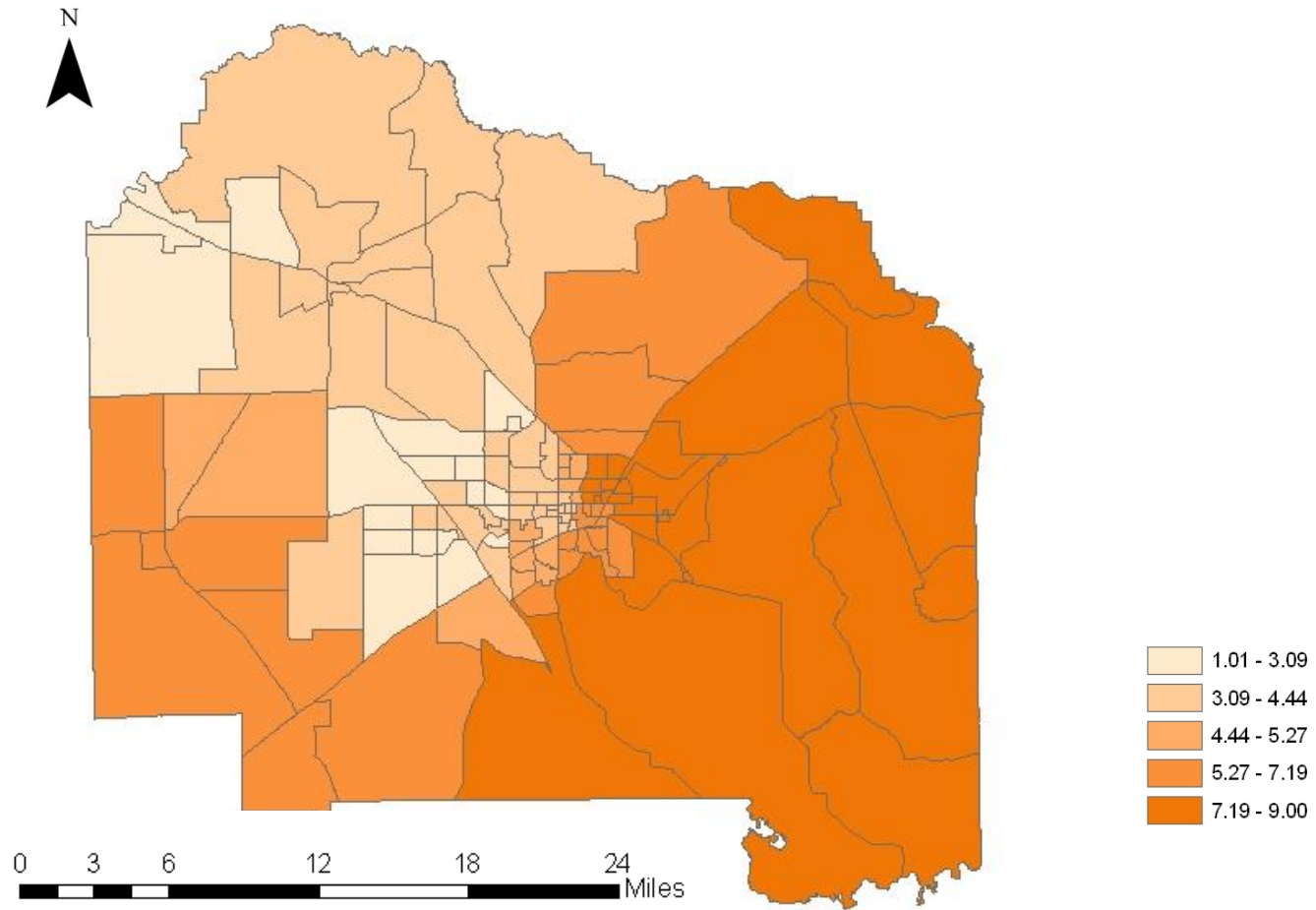
VARIABLE 3: **FREE/REDUCED LUNCH**

FORMULA:

$$V3 = \frac{\text{(Free/Reduced Lunch Students)}}{\text{(Total Students)}}$$

- Determine percentage of F/R Students per block group
- Rank 1 – 9 and divide into 5 breaks

VARIABLE 3: FREE/REDUCED LUNCH

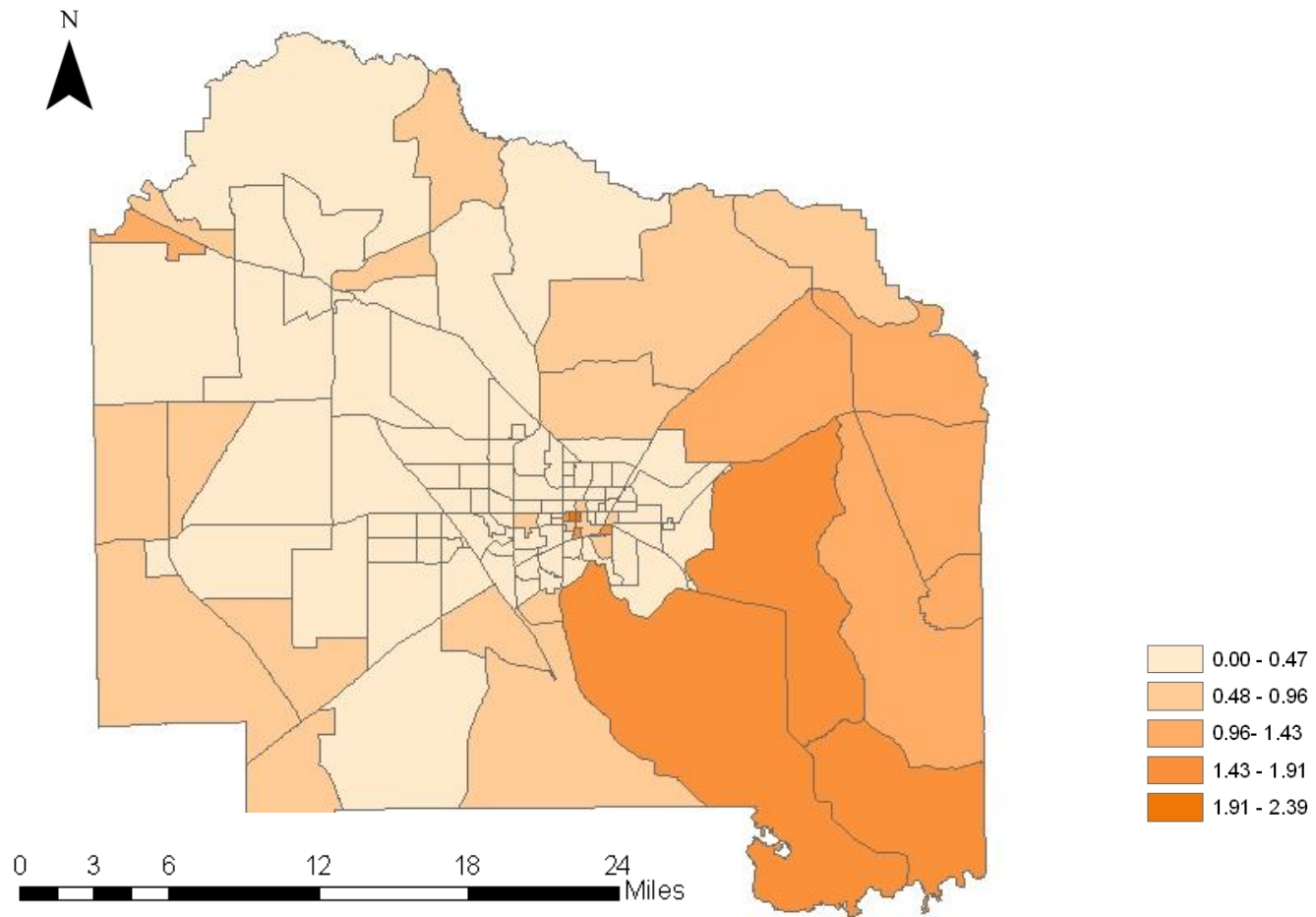


VARIABLE 4: SUBSTANDARD HOUSING**FORMULA:**

$$V4 = \frac{(\text{Low} \times 1) + (\text{Med} \times 2) + (\text{High} \times 3)}{(\text{Population} - \text{UF Population})}$$

- Values weighted by housing quality
- Population adjusted to account for UF students

VARIABLE 4: SUBSTANDARD HOUSING



OBJECTIVE 1: **CMPI**

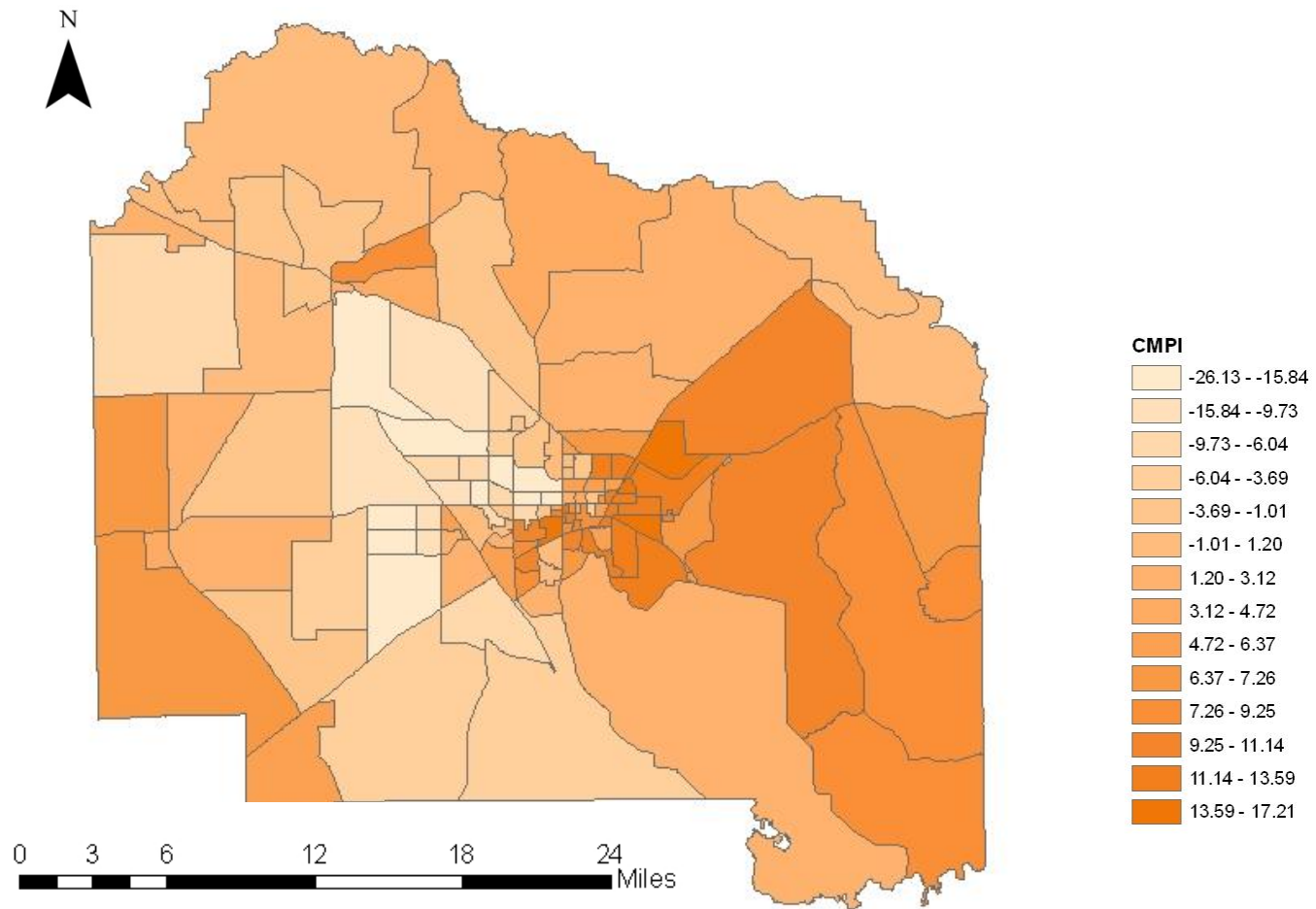
FORMULA:

$$V1 + V2 + V3 + V4 = \text{CMPI}$$

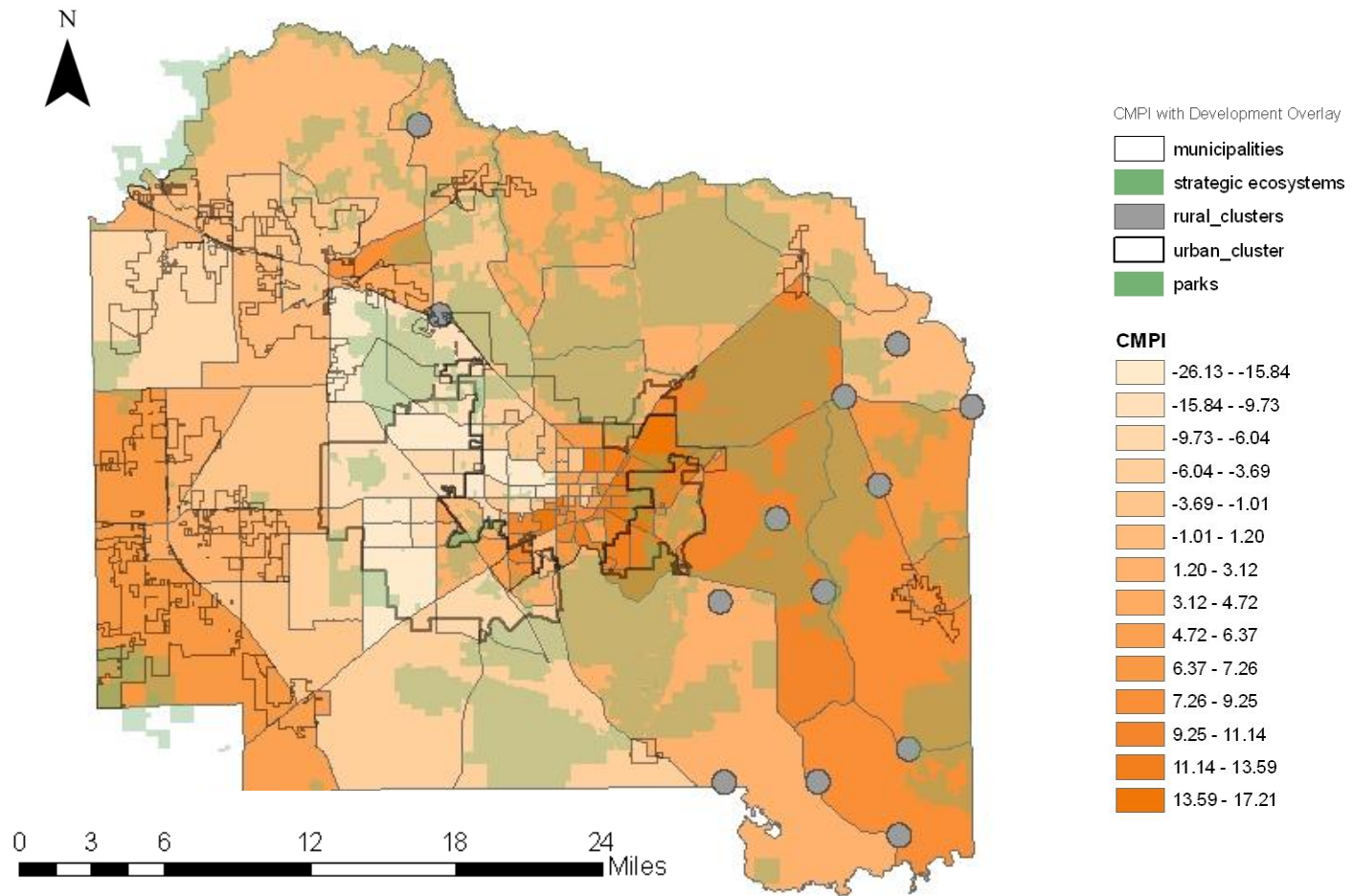
- Values from individual variables added to create indexed composite map of poverty
- Population adjusted to account for UF students

OBJECTIVE 1

OBJECTIVE COMPOSITE: CMPI

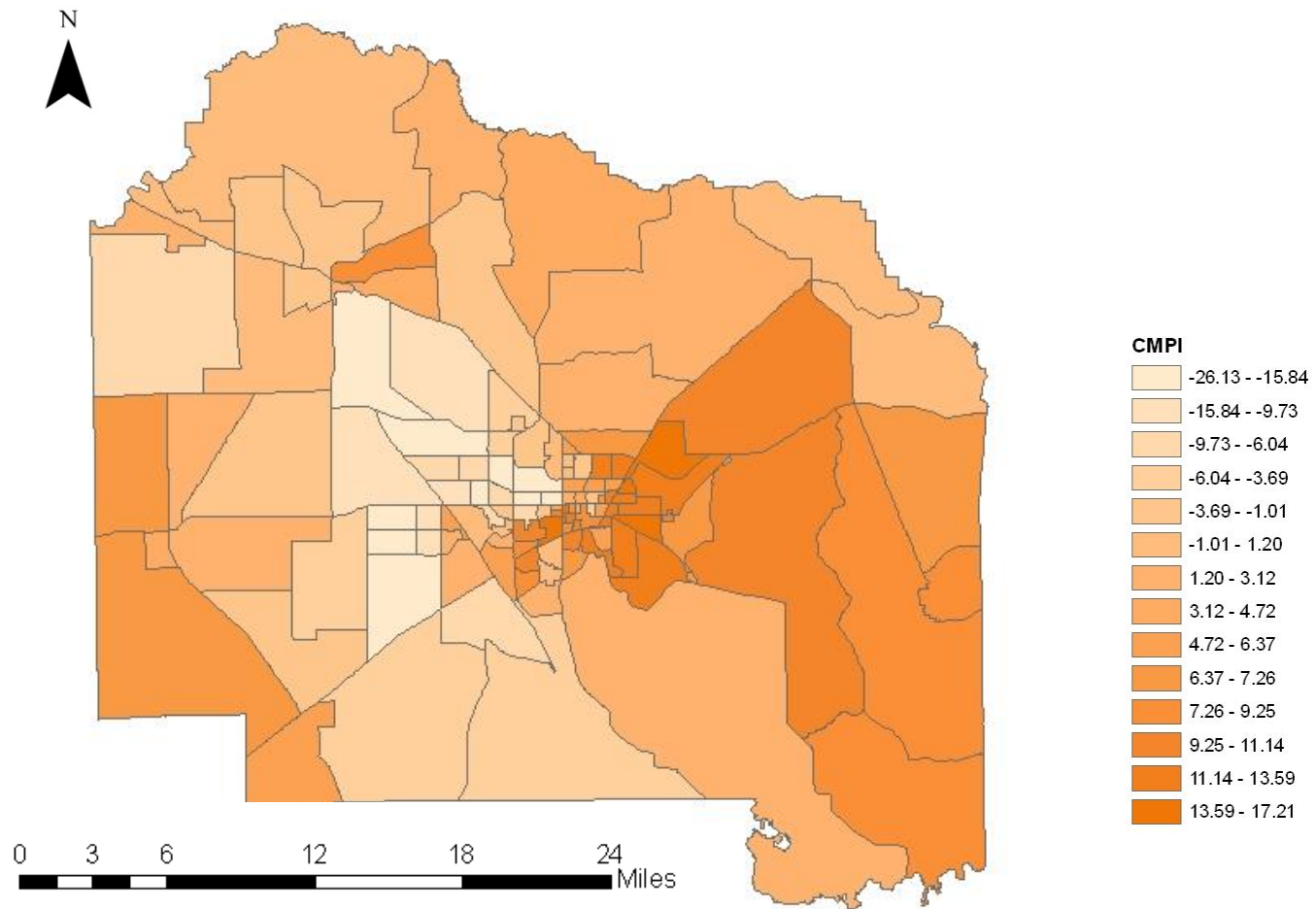


OBJECTIVE COMPOSITE: FACTORS



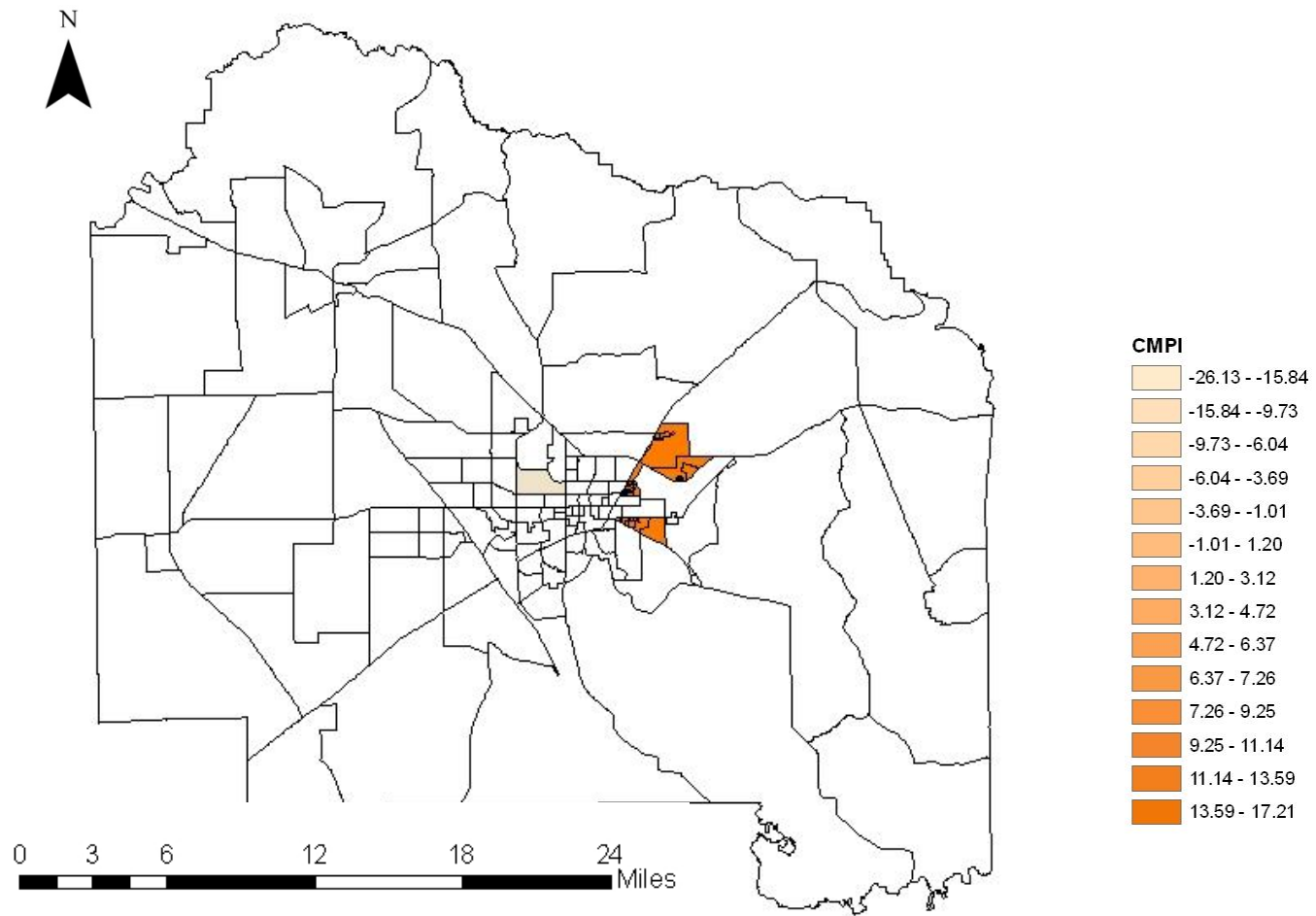
OBJECTIVE 1

OBJECTIVE COMPOSITE: CMPI



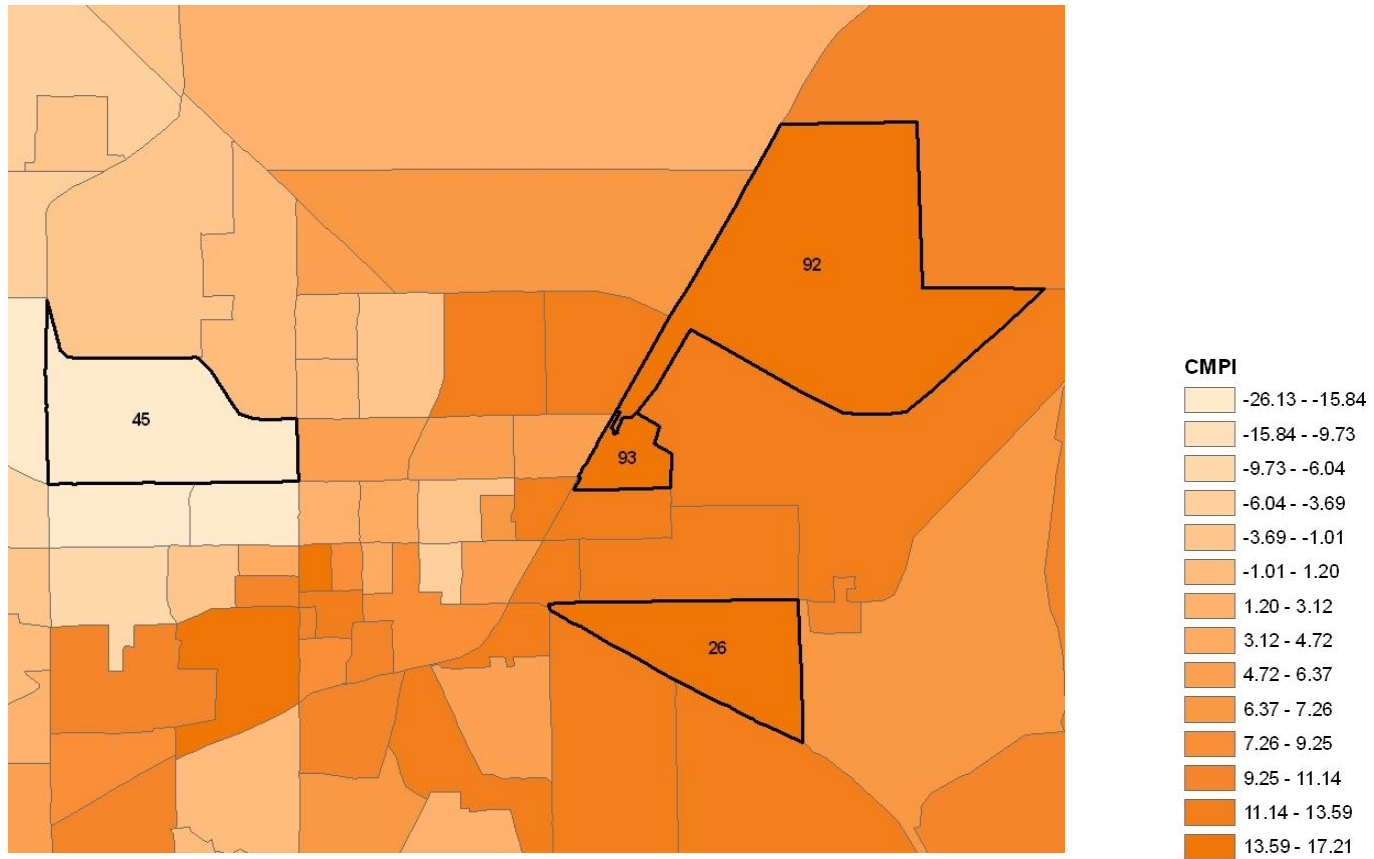
OBJECTIVE 1

OBJECTIVE COMPOSITE: TARGETS



OBJECTIVE 1

OBJECTIVE COMPOSITE: TARGETS



OBJECTIVE 2 METHODOLOGY

Texture of Poverty : Who are the Poor?

- Analyze socio-demographic statistics of regions targeted by CMPI as most impoverished

Statistic Variables

S1: Education

S2: Race

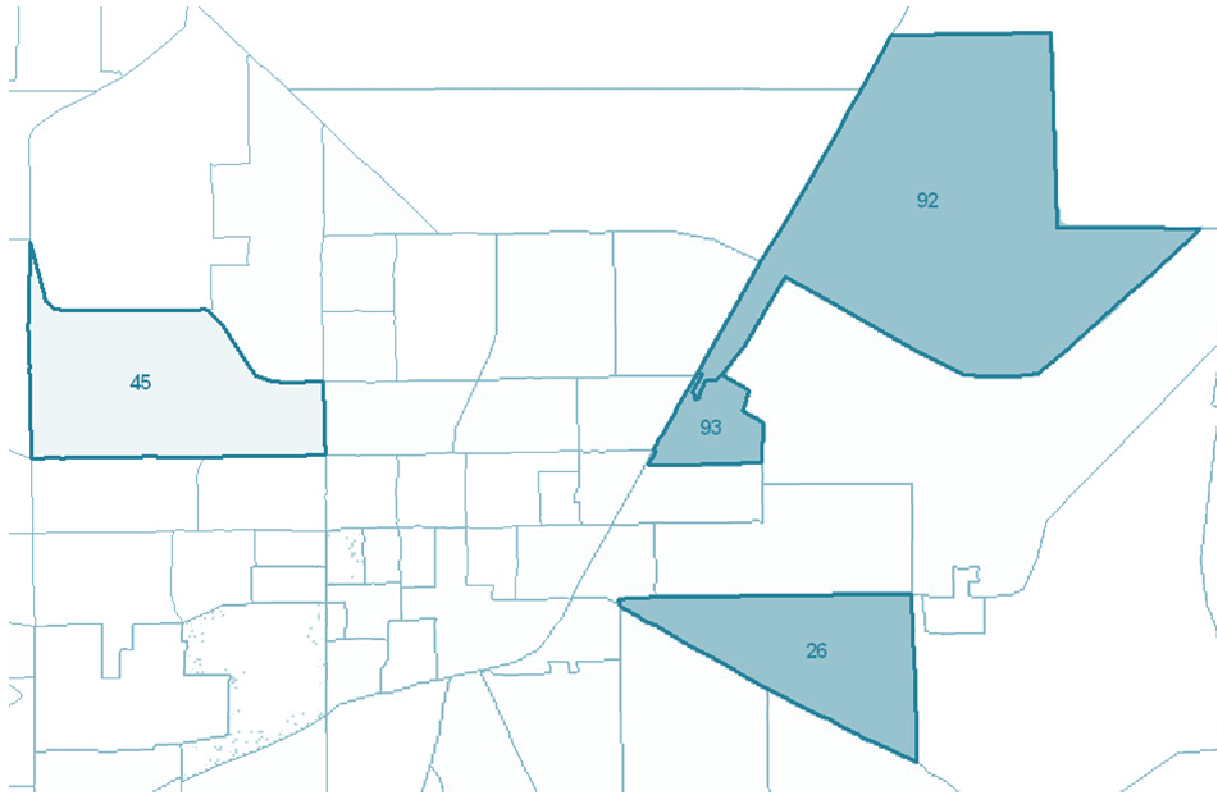
S3: Gender

S4: Age

S5: Family Employment Rate

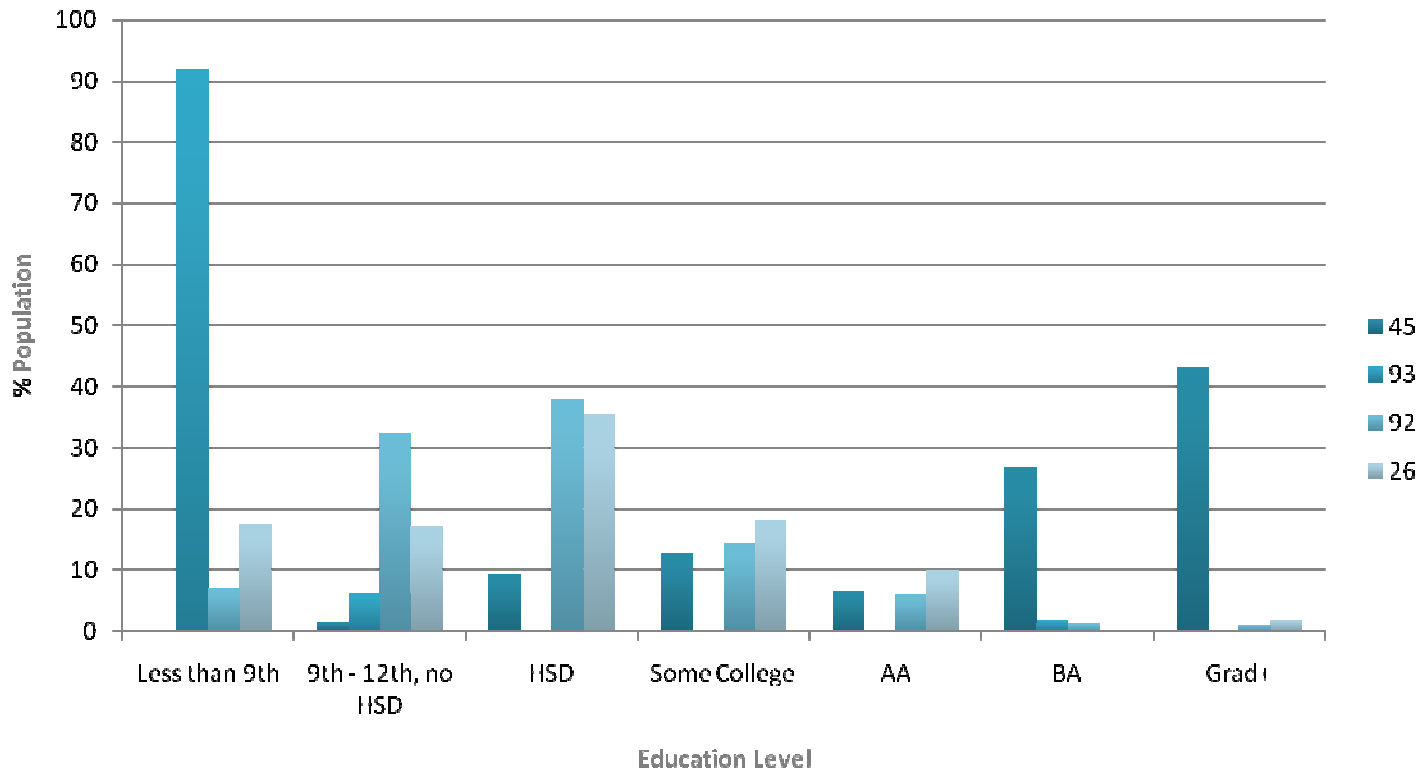
OBJECTIVE 1

OBJECTIVE COMPOSITE: TARGETS

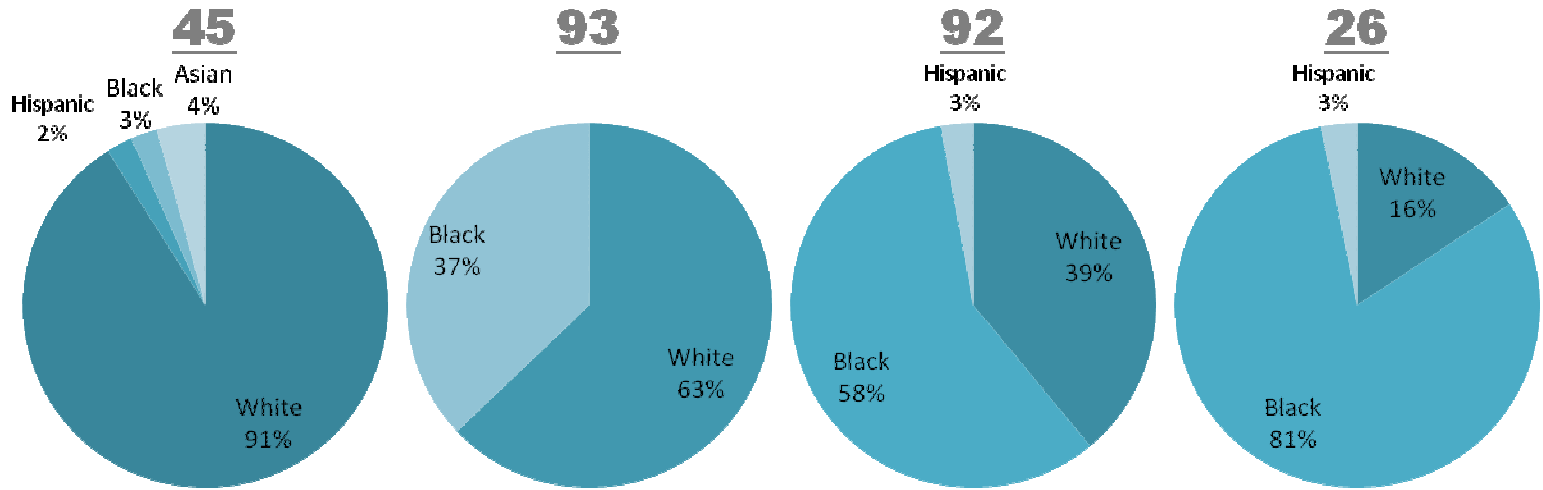


STATISTIC 1: EDUCATION

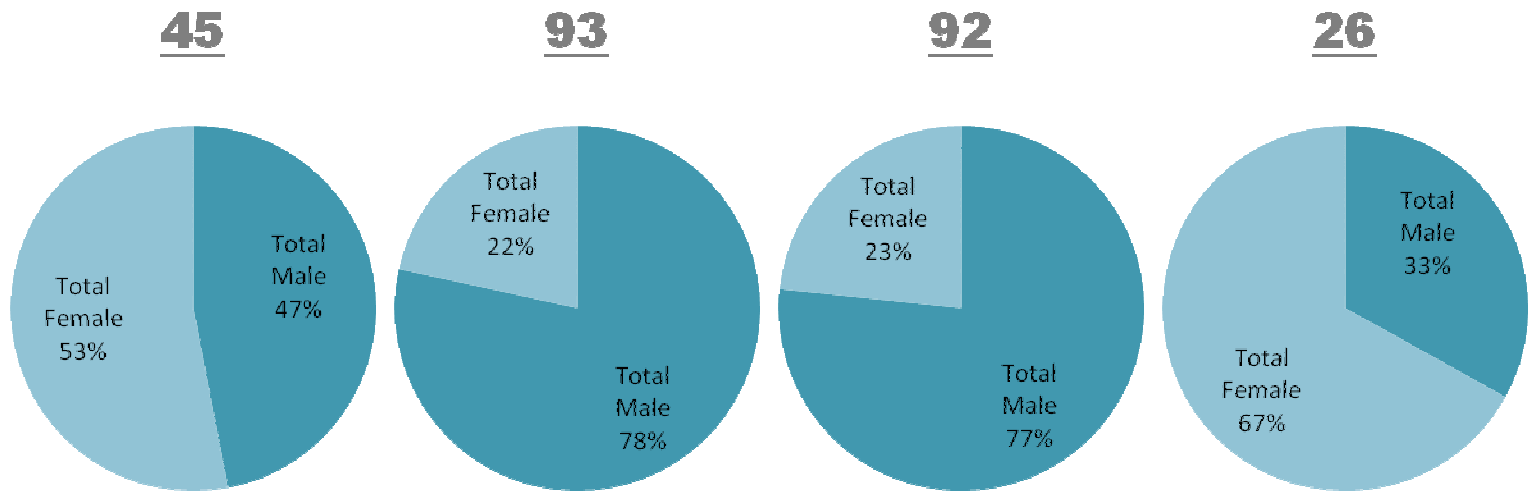
Education Level by Census Block Group



STATISTIC 2: RACE

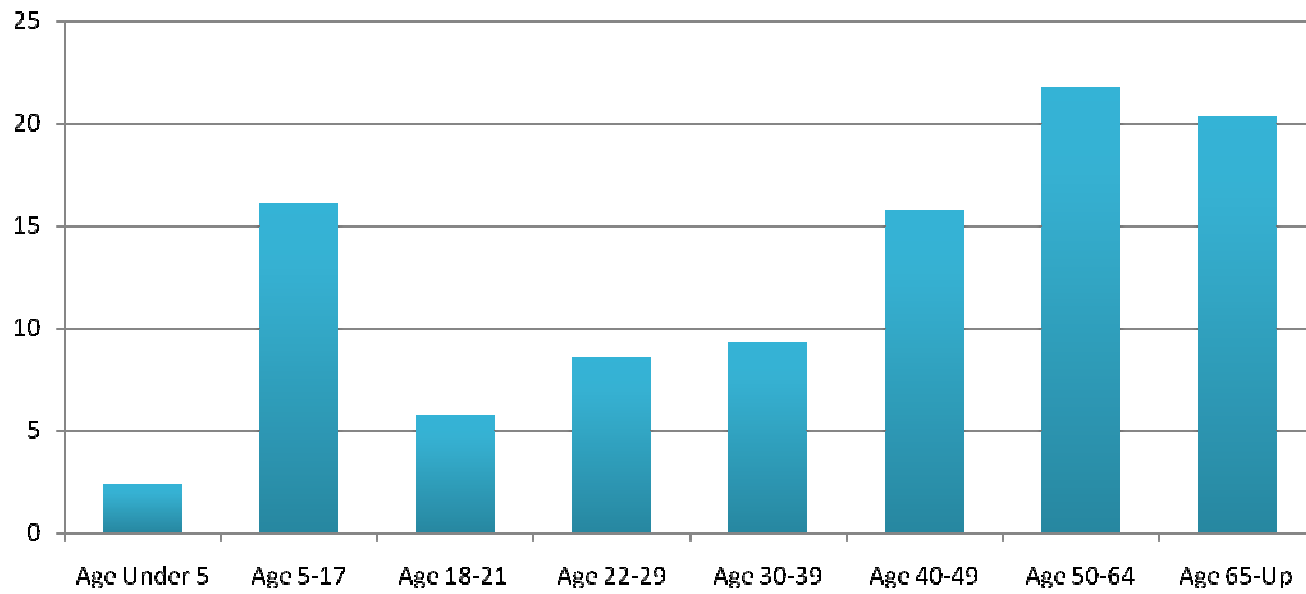


STATISTIC 2: GENDER

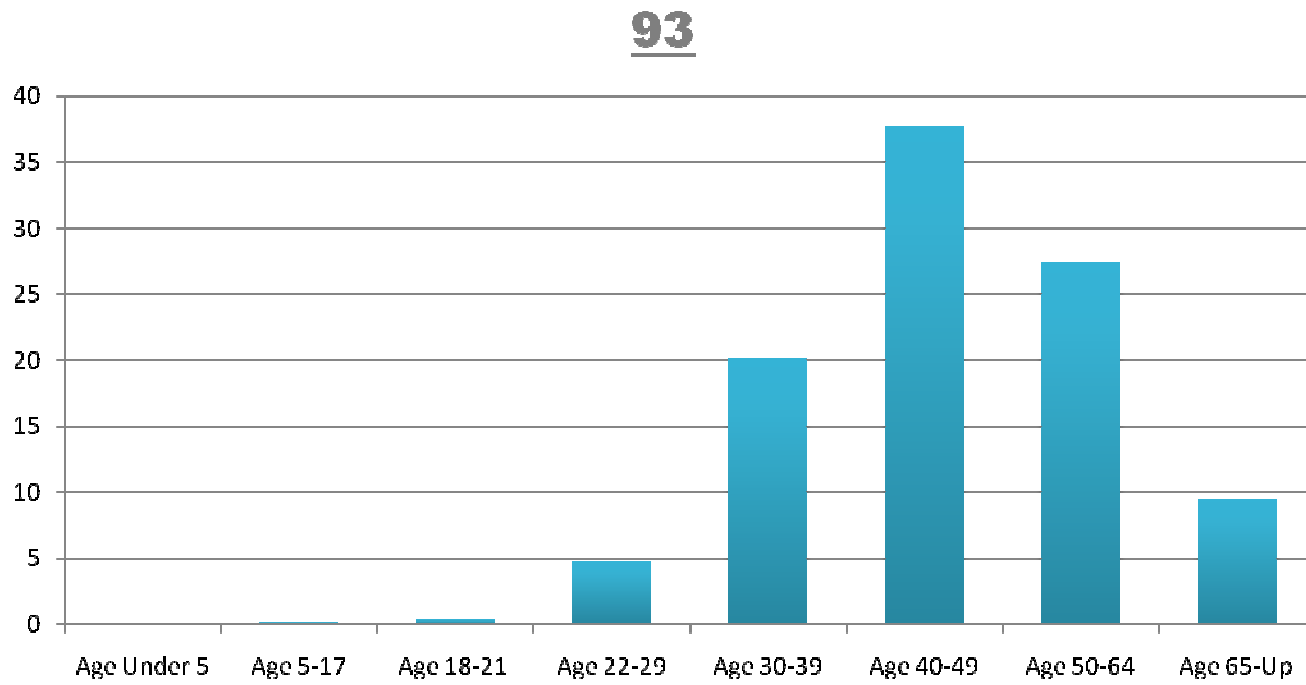


STATISTIC 4: AGE

45

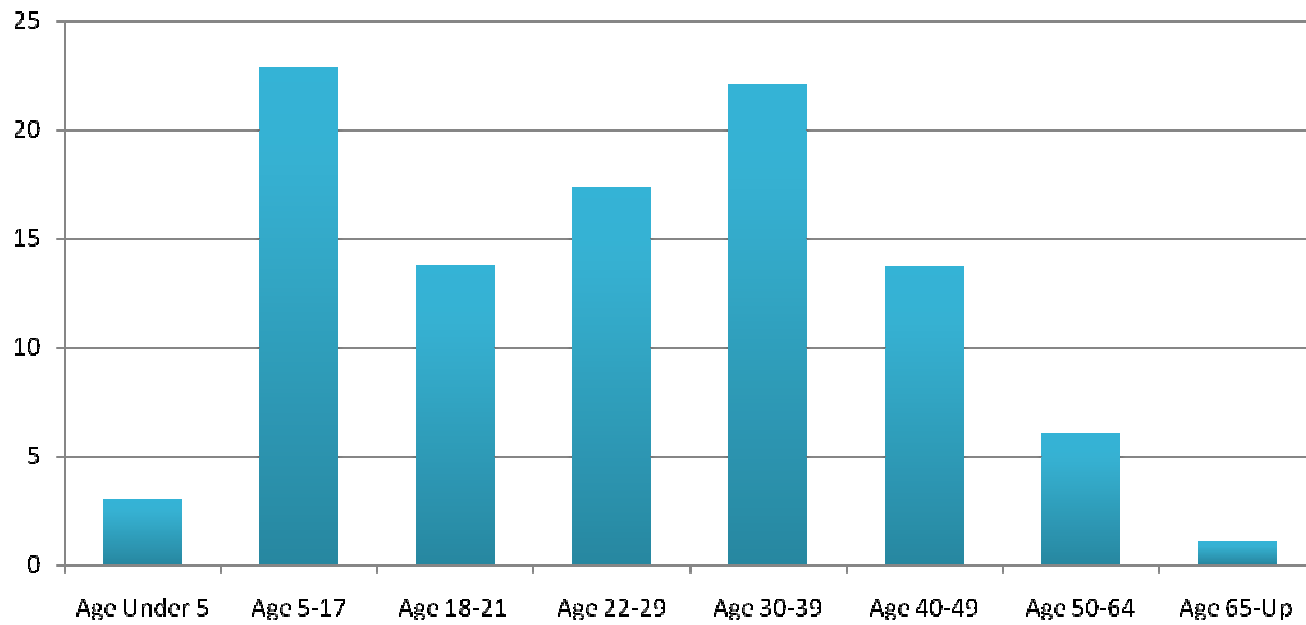


STATISTIC 4: AGE



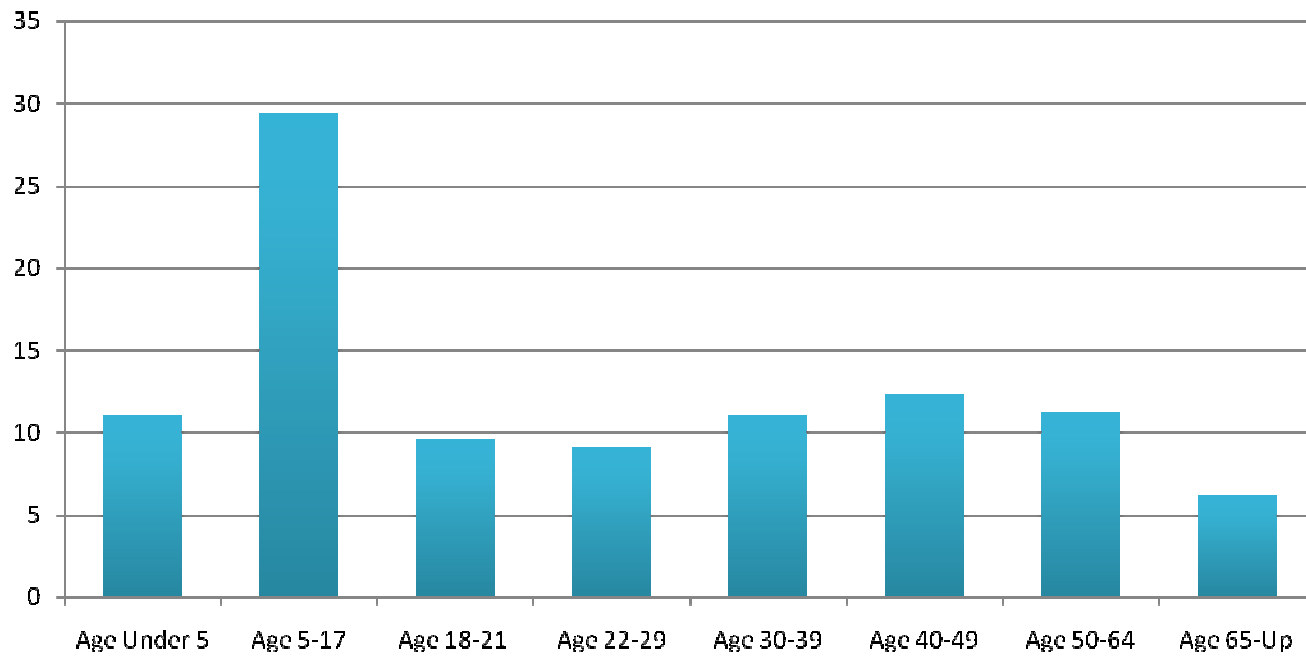
STATISTIC 4: AGE

92



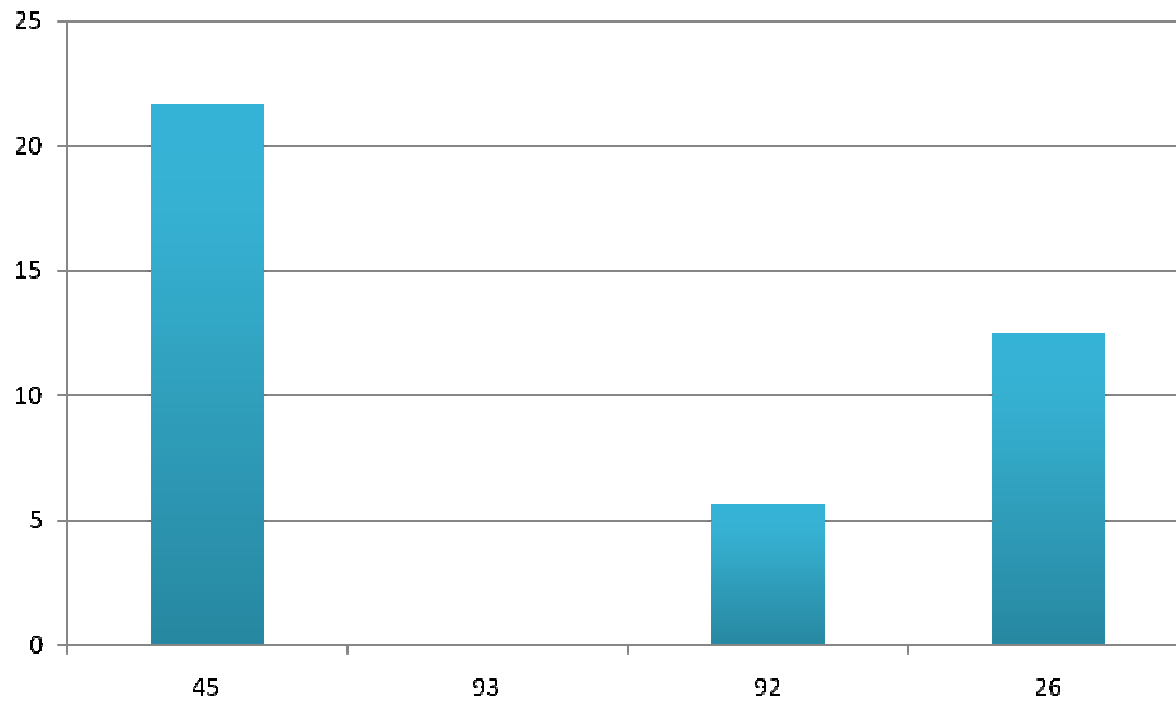
STATISTIC 4: AGE

26



STATISTIC 5: FAMILY EMPLOYMENT

Percentage of Population Employed



OBJECTIVE 3 METHODOLOGY

Access to Services : Opportunity and Vulnerability

Identify regions lacking to services using reasonable access buffers

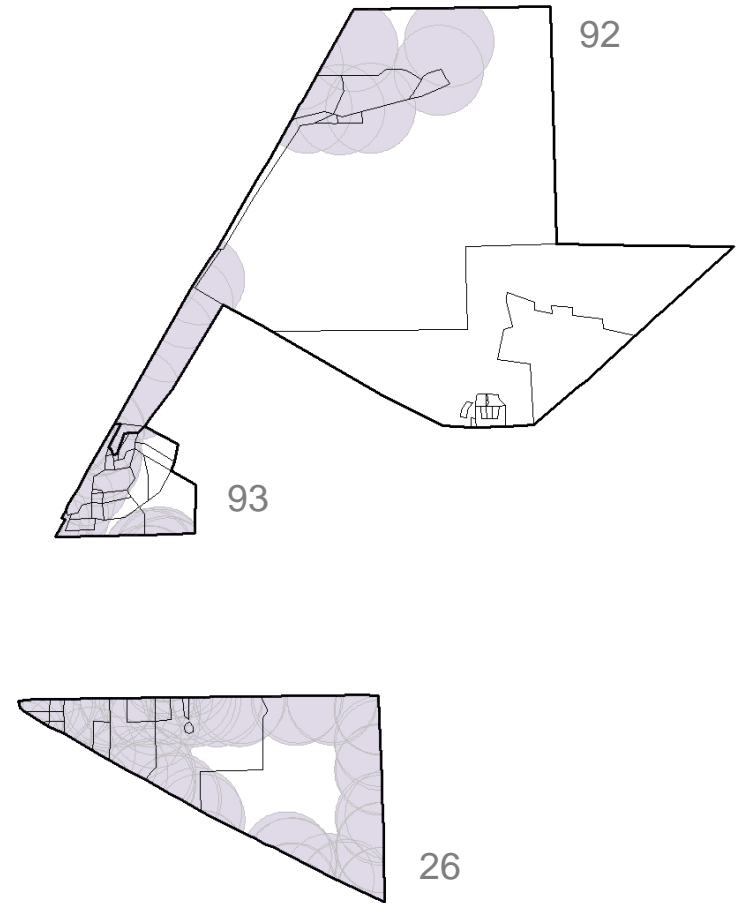
ACCESS VARIABLES

- Bus Stops
- Assisted Food Services
- Health Care Facilities
- Fire Protection
- Schools and Libraries
- Religious Centers
- Employment Opportunities

OBJECTIVE 3

ACCESS : BUS STOPS

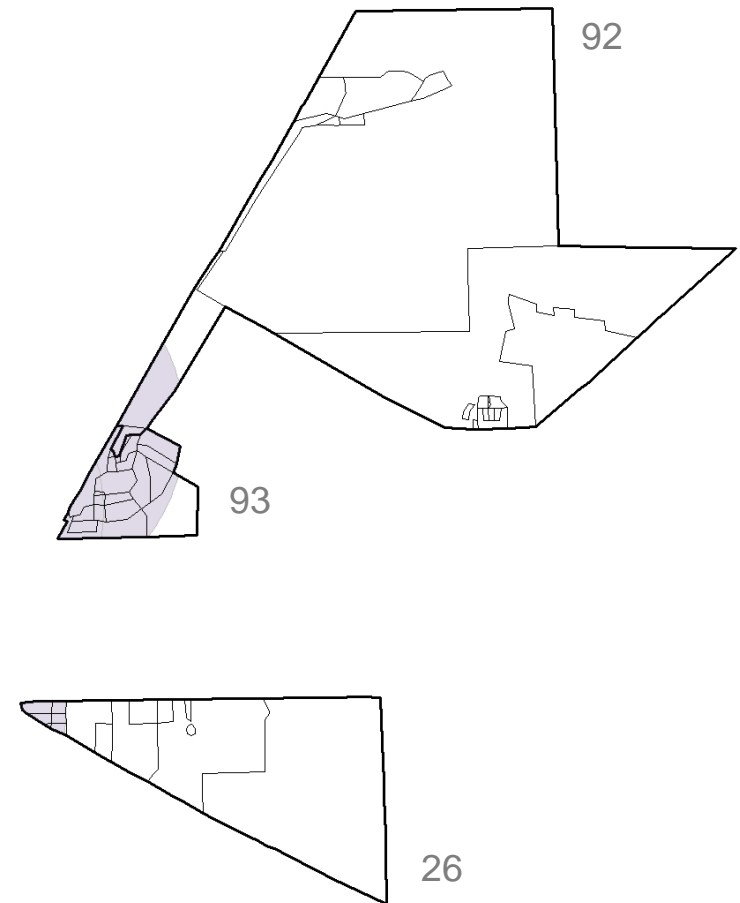
- Buffer Radius: 0.25 miles



OBJECTIVE 3

ACCESS : ASSISTED FOOD SERVICES

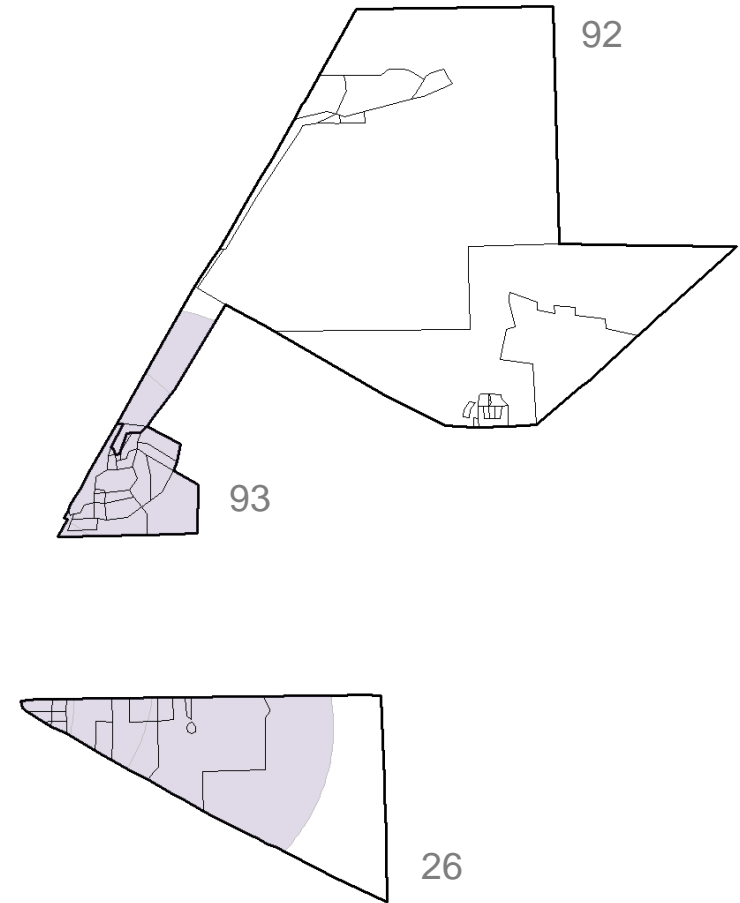
- Buffer Radius: 1 mile



OBJECTIVE 3

ACCESS : HEALTH CARE FACILITIES

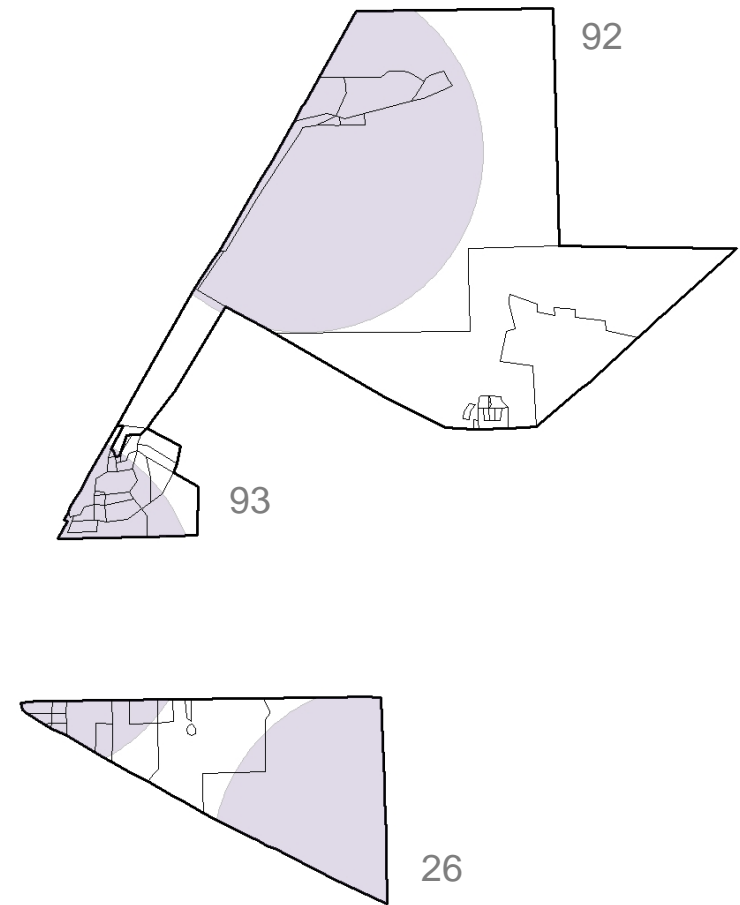
- Buffer Radius: 1 mile



OBJECTIVE 3

ACCESS : FIRE PROTECTION

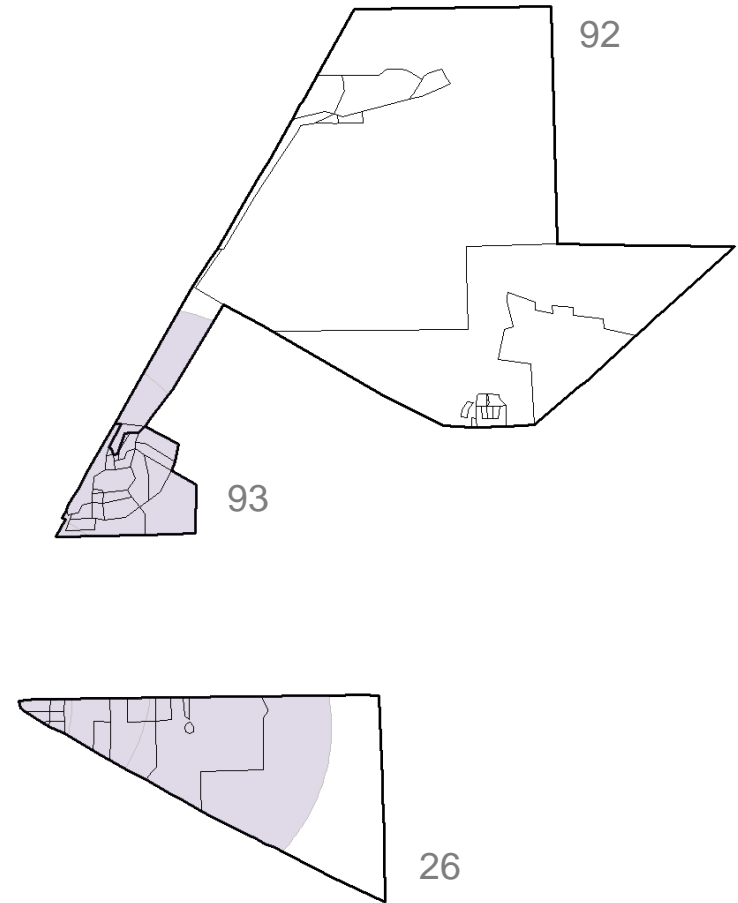
- Buffer Radius: 1 mile



OBJECTIVE 3

ACCESS : EDUCATIONAL FACILITIES

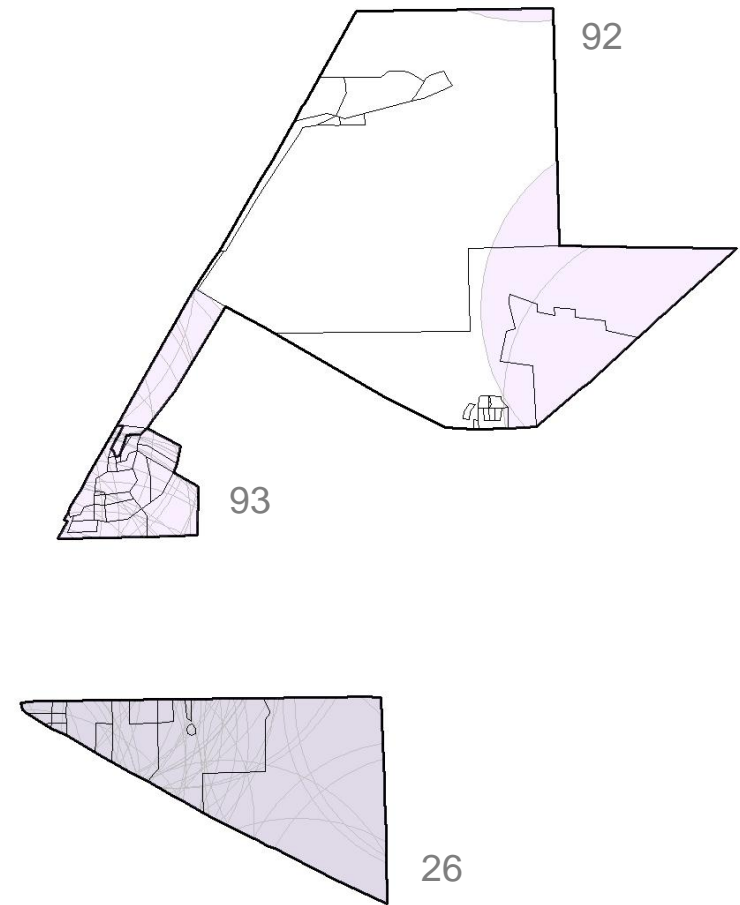
- Buffer Radius: 1 mile



OBJECTIVE 3

ACCESS : RELIGIOUS CENTERS

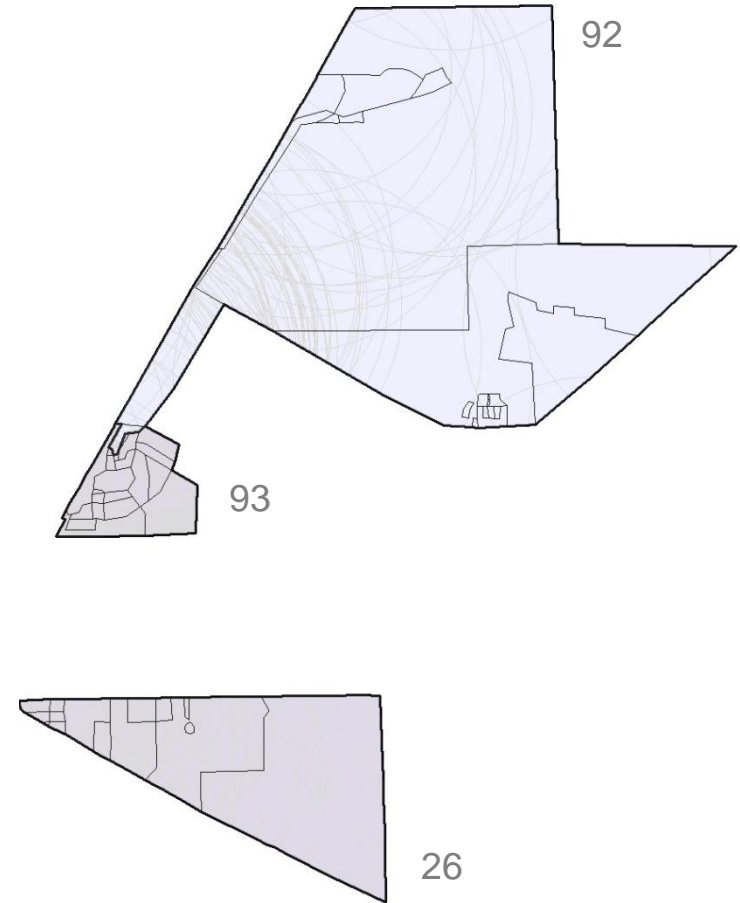
- Buffer Radius: 1 mile



OBJECTIVE 3

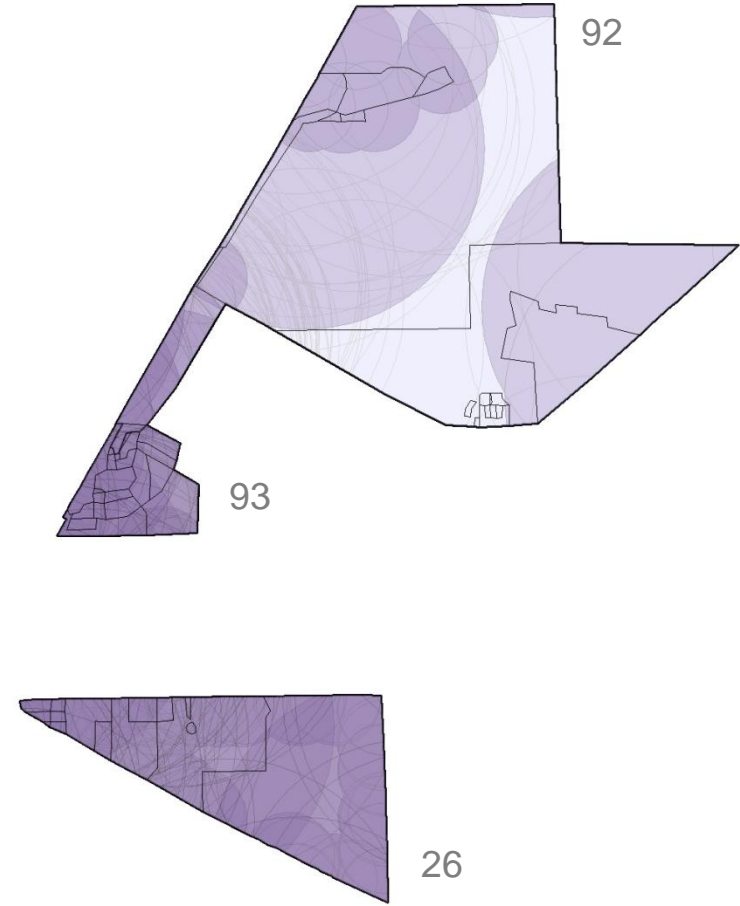
ACCESS : EMPLOYMENT OPPORTUNITY

- Buffer Radius: 1 mile



OBJECTIVE 3

ACCESS : COMPOSITE



OBJECTIVE 4: **IMPLICATIONS & RECOMMENDATIONS**

- Access to services for **most** people in the target zones is sufficient.
- Areas lacking access do not have a population density to economically justify providing access.

RECOMMENDATION 1: Establish a government entity or non-profit assisted food services facility Census Block Group 26.

RECOMMENDATION 2: Re-route existing bus lines to serve interior areas of Census Block Group 93.

REDEFINE : POVERTY THRESHOLD

Minimum level of income deemed necessary to achieve an adequate standard of living in a given country. In other words, poverty from a society's **point of view**.

The common **international poverty line** has been roughly \$1 a day, or more precisely \$1.08 at 1993 purchasing-power parity (PPP).

Global RichList



HOW RICH ARE YOU?

Every year we gaze enviously at the lists of the richest people in world. Wondering what it would be like to have that sort of cash. But where would you sit on one of those lists? Here's your chance to find out.

Just enter your annual income into the box below and hit 'show me the money'

MY ANNUAL INCOME \$ US 13,880 Show me the money!

Your RichList Position

= 748,765,901

You are the 748,765,901 richest person in the world!

You're in the **TOP 12.47%** richest people in the world!



Source: <http://globalrichlist.com/>

**Global
RichList**



HOW RICH ARE YOU?

Every year we gaze enviously at the lists of the richest people in world. Wondering what it would be like to have that sort of cash. But where would you sit on one of those lists? Here's your chance to find out.

Just enter your annual income into the box below and hit 'show me the money'

MY ANNUAL INCOME

\$ US



365

Show me the money!

**Your
RichList
Position**

= 5,460,000,000

You are the 5,460,000,000 richest person in the world!

You're in the **TOP 91%**
richest people in the world!



Source: <http://globalrichlist.com/>